

# **TEST REPORT**

## **(RoHS)**

**Sample Name: Tube connector**

Client Name: Zhejiang Ideal Bell Technology Co.,Ltd.

Service Agency: Shanghai EBTest Technology Co., Ltd.



## TEST SPECIFICATION:

According to customer request, test the content of 1. Pb 2. Cd 3. Hg 4. Cr<sub>6+</sub> 5. PBBs 6. PBDEs in the sample. For details refer to next page(s).

## APPLICANT IDENTIFICATION:

APPLICANT: Zhejiang Ideal Bell Technology Co.,Ltd.  
 ADDRESS: No 56, Huancheng South Road, Pan'an Industrial Park, Jinhua City, Zhejiang, China

## SAMPLE DESCRIPTION:

SAMPLE NAME: Tube connector  
 SAMPLE DESCRIPTION: Connector parts, Refer to sample photo.  
 TEST PERIOD: 2014.12.23 — 2014.12.29  
 ISSUED DATE: 2014.12.29

## TEST METHOD(S):

Testing Item		Testing Method	Testing Limit (mg/kg)
Pb		With reference to IEC 62321:2008, determined by ICP-OES	2
Cd		With reference to IEC 62321:2008, determined by ICP-OES	2
Hg		With reference to IEC 62321:2008, determined by ICP-OES	2
Cr <sub>6+</sub>		With reference to IEC 62321:2008, determined by UV-vis	1
PBBs	MONOBB	With reference to IEC 62321:2008, determined by GC-MS	5
	DIBB		5
	TRIBB		5
	TETRABB		5
	PENTABB		5
	HEXABB		5
	HEPTABB		5
	OCTABB		5
	NONABB		5
	DECABB		5
	MONOBDE		5
	DIBDE		5
	TRIBDE		5
	TETRABDE		5



# RoHS TEST REPORT

E141222013A

PBDEs	PENTABDE	With reference to IEC 62321:2008, determined by GC-MS	5
	HEXABDE		5
	HEPTABDE		5
	OCTABDE		5
	NONABDE		5
	DECABDE		5

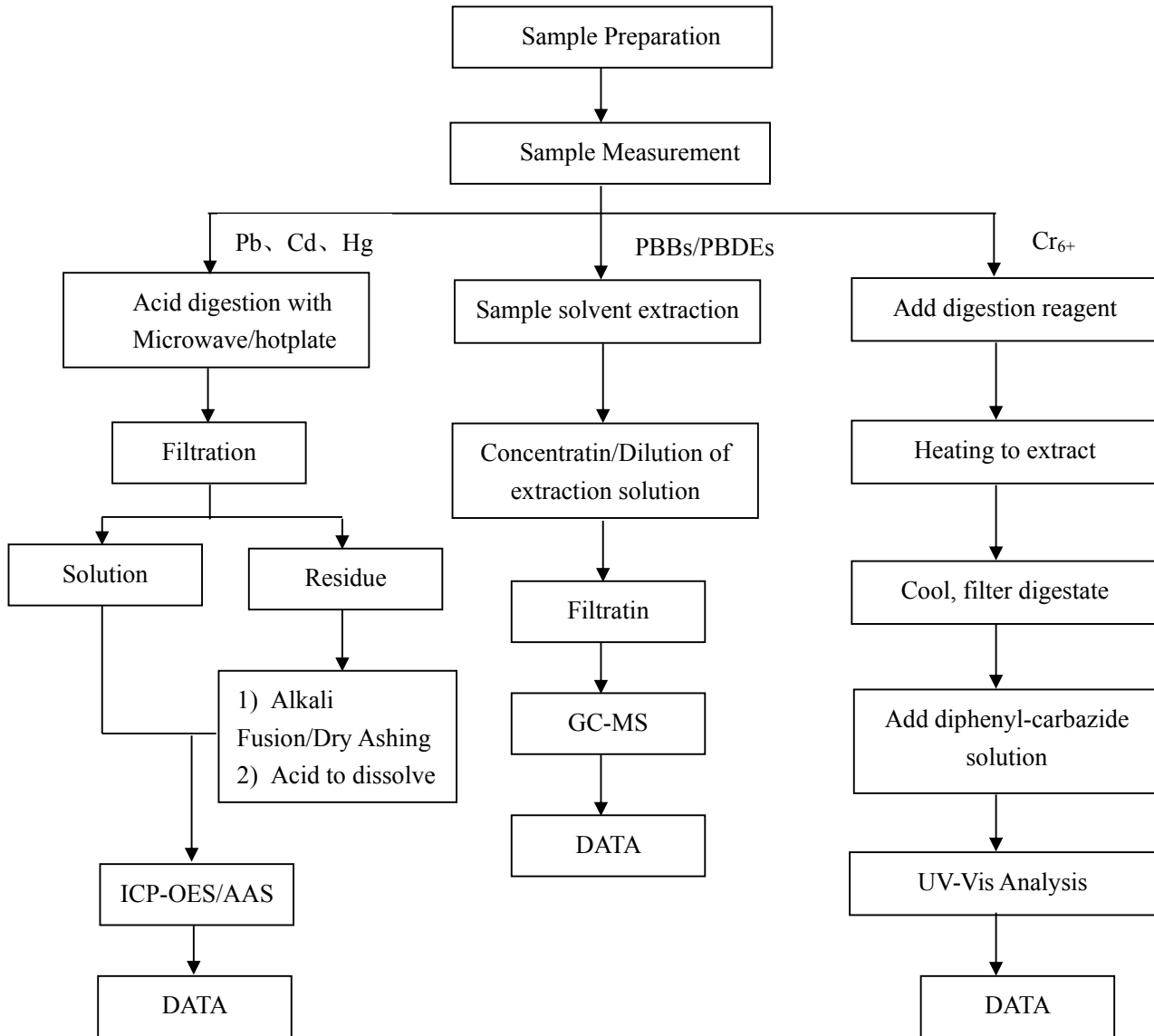
## TEST RESULT(S):

Testing Item(s)		Directive Limit (mg/kg)	Result (mg/kg)	
			Metal part	Non-metal part
Pb		≤1000	Exemption	N. D.
Cd		≤100	N. D.	N. D.
Hg		≤1000	N. D.	N. D.
Cr <sub>6+</sub>		≤1000	N. D.	N. D.
PBBs	MONOBB	≤1000	N. A.	N. D.
	DIBB		N. A.	N. D.
	TRIBB		N. A.	N. D.
	TETRABB		N. A.	N. D.
	PENTABB		N. A.	N. D.
	HEXABB		N. A.	N. D.
	HEPTABB		N. A.	N. D.
	OCTABB		N. A.	N. D.
	NONABB		N. A.	N. D.
	DECABB		N. A.	N. D.
PBDEs	MONOBDE	≤1000	N. A.	N. D.
	DIBDE		N. A.	N. D.
	TRIBDE		N. A.	N. D.
	TETRABDE		N. A.	N. D.
	PENTABDE		N. A.	N. D.
	HEXABDE		N. A.	N. D.
	HEPTABDE		N. A.	N. D.
	OCTABDE		N. A.	N. D.
	NONABDE		N. A.	N. D.
	DECABDE		N. A.	N. D.

## TESTING ENVIRONMENT:

Testing environment: Temperature(22°C-26°C); Humidity(55%-65%)

## TESTING FLOW CHART:



## REMARKS:

mg/kg = PARTS PER MILLION; N.D.=NOT DETECTED or < MDL; N.A.=NOT APPLICABLE; N.T.=NOT TESTED AS THE APPLICANT'S REQUEST.

1. THE REPORT RELATES TO THE SAMPLE(S) SUPPLIED BY THE APPLICANT.
2. THIS TEST REPORT IS NOT PERMITTED TO BE DUPLICATED EXCEPT IN FULL.

## CONCLUSION:

Based on the test results, the sample conform to the requirements of the 2011/65 / EU-RoHS Directive Limit.

## SAMPLE PHOTO(S):



\*\*\*\*\* END \*\*\*\*\*

